

# TI300PTZ-S|TI600PTZ-S

## Online Monitoring Thermal Imaging Pan&Tilt

**TI300PTZ-S|TI600PTZ-S** integrates thermal imaging camera, CCD camera and 360°continuous rotating pan&tilt. It is suitable for 24h/365d temperature monitoring for machinery, electronic equipment and flammable materials; it can detect potential dangers and automatically alarm timely so as to ensure the safety.

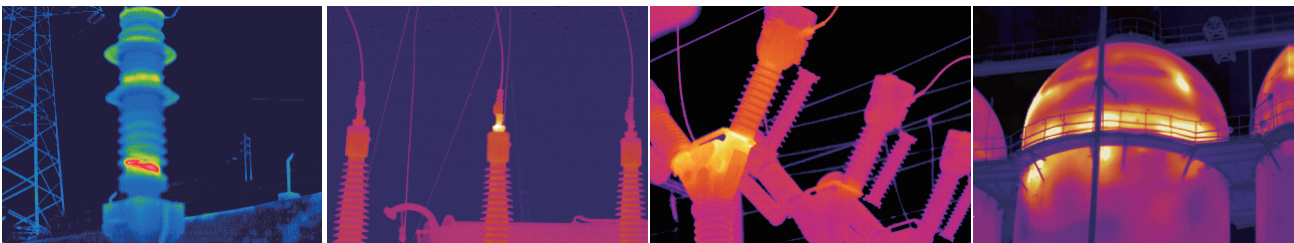


### PRODUCT FEATURE

- Visible light and infrared light
- Multiple presets for long-term operation
- Full working environment design
- Anti-shock, anti-corrosion, dustproof and water proof, **IP66**
- Integrated design, compact and reliable

### APPLICATION CASE

- Robot, Power transformer station/Transformer, High voltage switchgear, Control room, High voltage electrical connector
- Mechanical, Chemical, Flammable materials, Safe production
- Equipment, Metallurgy



# TECHNICAL SPECIFICATIONS

Item	TI300PTZ-S	TI600PTZ-S
<b>Detector Data</b>		
Type	Uncooled FPA	
IR resolution	384×288	640×480
Pixel pitch	17μm	
Spectral range	7.5~14μm	
NETD/Sensitivity	60mK	40mK
<b>Lens Data</b>		
Lens	Standard 15mm lens    6.2mm optional	Standard 25mm lens    13mm optional
FOV	Standard lens 24°×18°    Optional lens 55°×43°	Standard lens 24°×18°    Optional lens 45°×35°
Minimum imaging distance	50cm	
IFOV	1.13mrad                    2.74mrad	0.68mrad                    1.3mrad
Focus	Motor, support auto focus	
<b>Measurement</b>		
Temp range	-20°C~+250°C (Scalable to 650°C)	
Measurement accuracy	±2°C/±2% (Reading range), take the maximum	
Temp measurement mode	Spot measure, box measure, highest temp	
Measurement correction	Auto/Manual	
Palette	Black hot, white hot, rainbow, iron red	
Electronic zoom	2X, 4X	
<b>CCD Video Camera</b>		
Lens focal length	F4.3 -129.0mm (more focal lengths are optional)	
Resolution	1920×1080, max support 2048×1536	
Signal system	PAL/NTSC	
Sensor type	1/2.8" Progressive Scan CMOS	
Zoom	30X optics, 12X digital	
Minimum illumination	0.05Lux	
SNR	>50dB	
Electronic image stabilization	ON/Off	
<b>Pan&amp;Tilt</b>		
Horizontal range	0°~360°	
Horizontal speed	0.01°~30°/s	
Vertical range	-90°~90°	
Vertical speed	0.1°~15°/s	
Presetting amount	200	
Repositioning accuracy	±0.1°	
<b>Interface</b>		
Video output	Thermal image analog video, network video	
Control	RS485	
Protocol	PECLO-D	
Baud rate	2400-4800-9600bps auto recognition	
<b>Network</b>		
Type	1000Mbps	
Network protocol	IEEE802.3	
Connector interface	RJ-45	
Communication protocol	IEC60807-5-104、IEC61850	
<b>Power System</b>		
Working voltage	DC: 24V	
Power consumption	Static 10W; dynamic 23W	
<b>Environment Parameters</b>		
Operating temperature range	-25°C~+50°C	
Storage temperature range	-40°C~+70°C	
Encapsulation	IP66	
Vibration protection	Horizontal 9G, vertical 15G	
<b>Physical Data</b>		
Size	348mm×200mm×200mm	
Weight	≤5kg	
<b>Packing</b>		
Standard	Thermal Imaging Pan&Tilt, user manual, warranty card, packing box, USB flash drive	

\*This manual is for reference only. Due to product updates and improvements, contents and parameters are subject to change without notice.

